

THE BRAND YOU KNOW AND TRUST HAS A NEW NAME

GRACE



gcp applied technologies

POST APPLIED WATERPROOFING

BITUTHENE®

ISO PROF
SZIGETELÉSFORGALMAZÓ Kft.

HYDRODUCT® 220 OR
PROTECTION COURSE

BITUTHENE®
MEMBRANE

PREPRUFE®
DETAIL TAPE

HYDRODUCT®
COIL 600
PERIMETER
DRAIN

12 In (300 mm)
BITUTHENE
STRIP

6 in
(150 mm)

BITUTHENE
LIQUID
MEMBRANE
TERMINATION
BEAD

ADCOR®
WATERSTOP

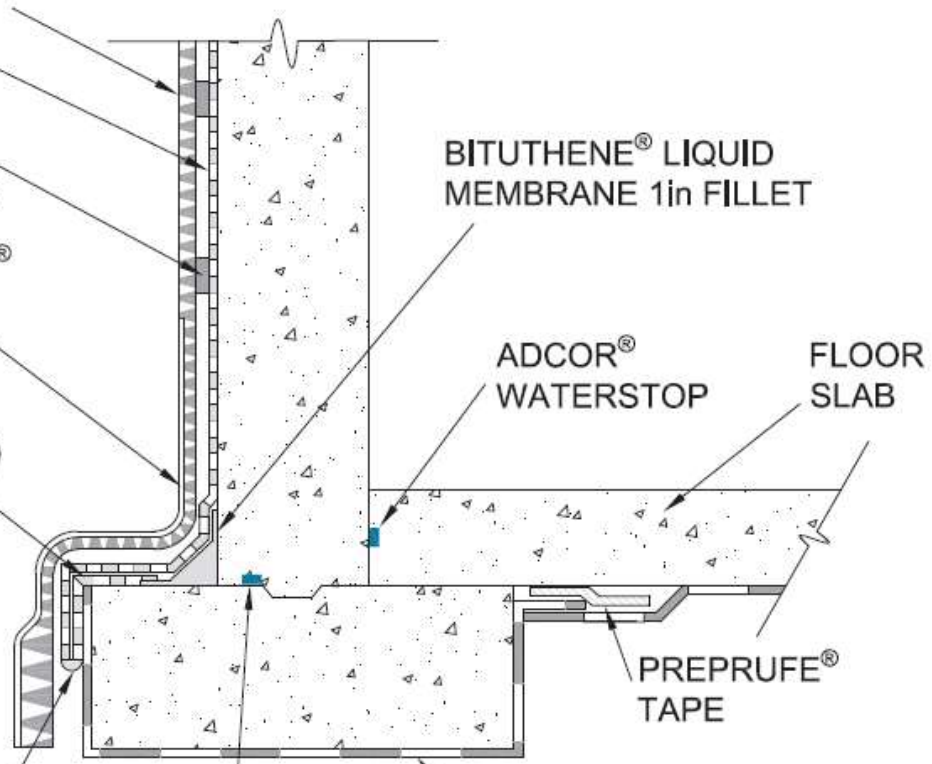
ADCOR®
WATERSTOP

PREPRUFE®
MEMBRANE

BITUTHENE® LIQUID
MEMBRANE 1in FILLET

FLOOR
SLAB

PREPRUFE®
TAPE

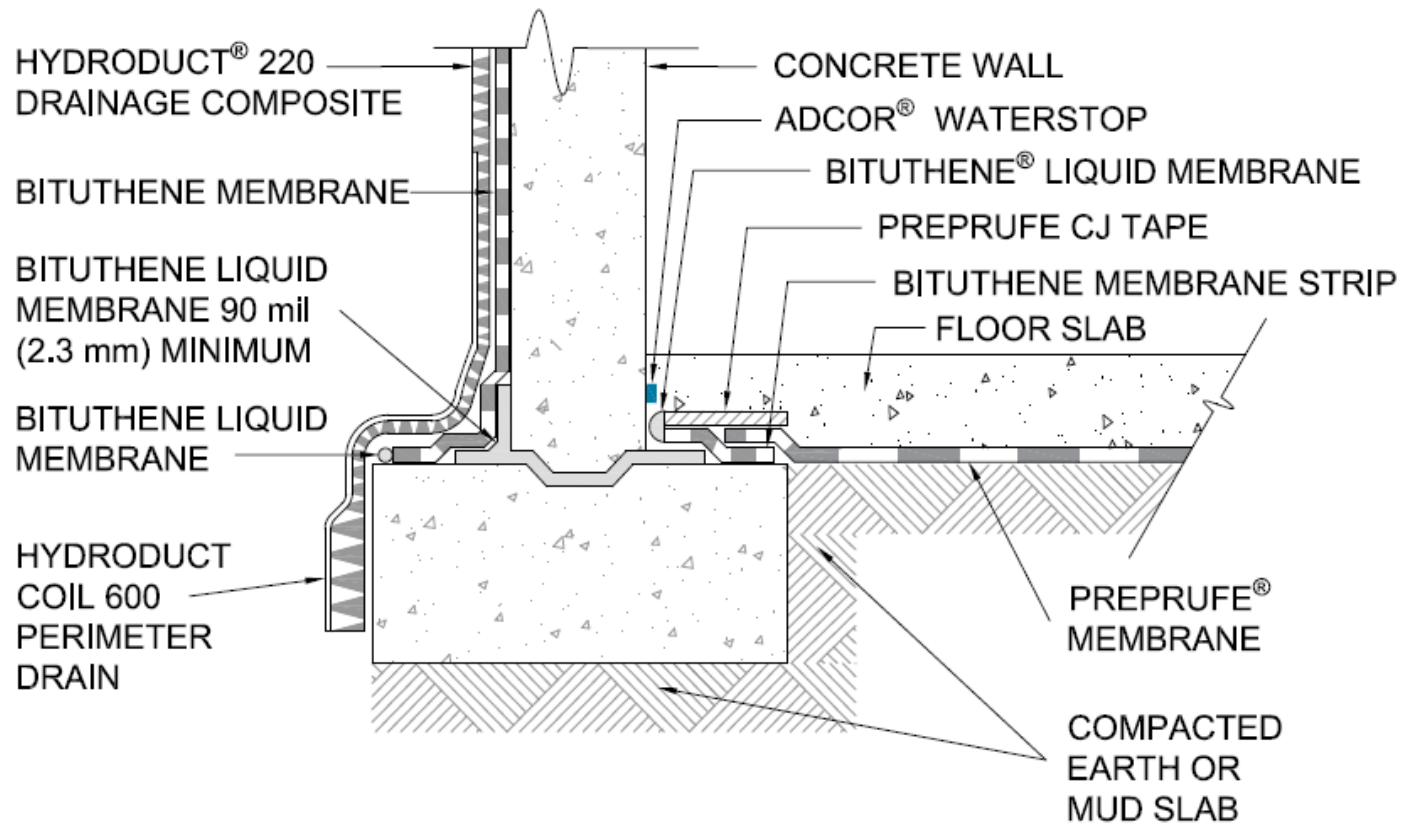


NOTE: GCP MAY REQUIRE AN ALTERNATE GCP WATERSTOP BASED ON DESIGN CONDITIONS



**FOUNDATION WALL
FLOOR SLAB AT FOOTING LEVEL (OPTION - 2)
BITUTHENE® WATERPROOFING SYSTEM**

DRAWING: BIT-002
SCALE: Not to scale
EFFECTIVE DATE: 07/01/2016
SUPERCEDES: 04012015



- NOTES:
- THE FOOTING KEYWAY SHOULD BE FORMED TO CREATE A REGULAR AND UNIFORM SHAPE ALLOWING PROPER DETAILING OF THE BITUTHENE LIQUID MEMBRANE.
 - GCP MAY REQUIRE AN ALTERNATE GCP WATERSTOP BASED ON DESIGN CONDITIONS



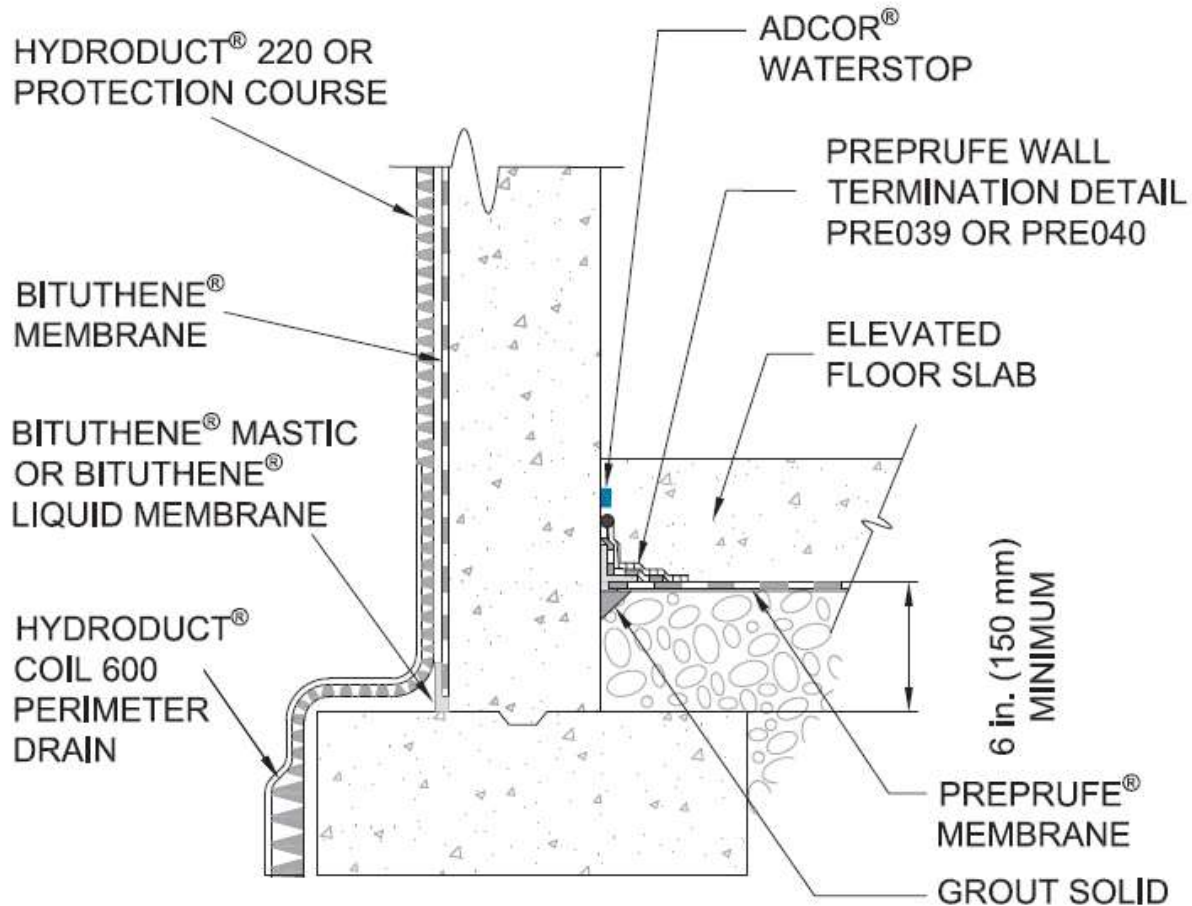
**FOUNDATION WALL
FLOOR SLAB AT FOOTING LEVEL (OPTION - 4)
BITUTHENE® WATERPROOFING SYSTEM**

DRAWING: BIT-004

SCALE: Not to scale

EFFECTIVE DATE: 07/01/2016

SUPERCEDES: 04012015



NOTES:

- INTENDED FOR PROJECTS WITH PERMANENT DEWATERING OR NON-HYDROSTATIC CONDITIONS
- GCP MAY REQUIRE AN ALTERNATE GCP WATERSTOP BASED ON DESIGN CONDITIONS



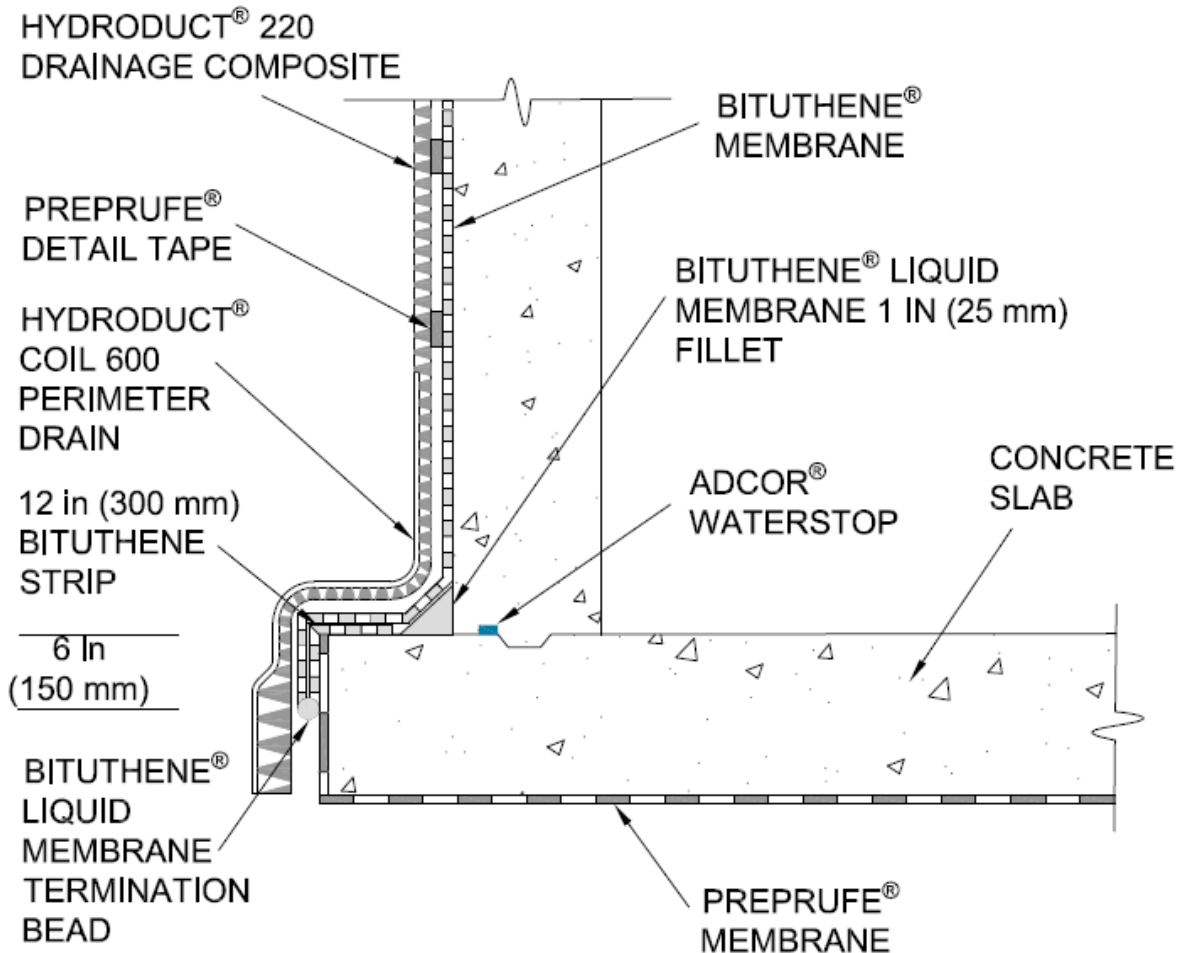
FOUNDATION WALL
ELEVATED FLOOR SLAB (OPTION - 2)
BITUTHENE® WATERPROOFING SYSTEM

DRAWING: BIT-006

SCALE: Not to scale

EFFECTIVE DATE: 07/01/2016

SUPERCEDES: 04012015



NOTE - GCP MAY REQUIRE AN ALTERNATE GCP WATERSTOP BASED ON DESIGN CONDITIONS



FOUNDATION WALL STRUCTURAL SLAB - OPTION 2

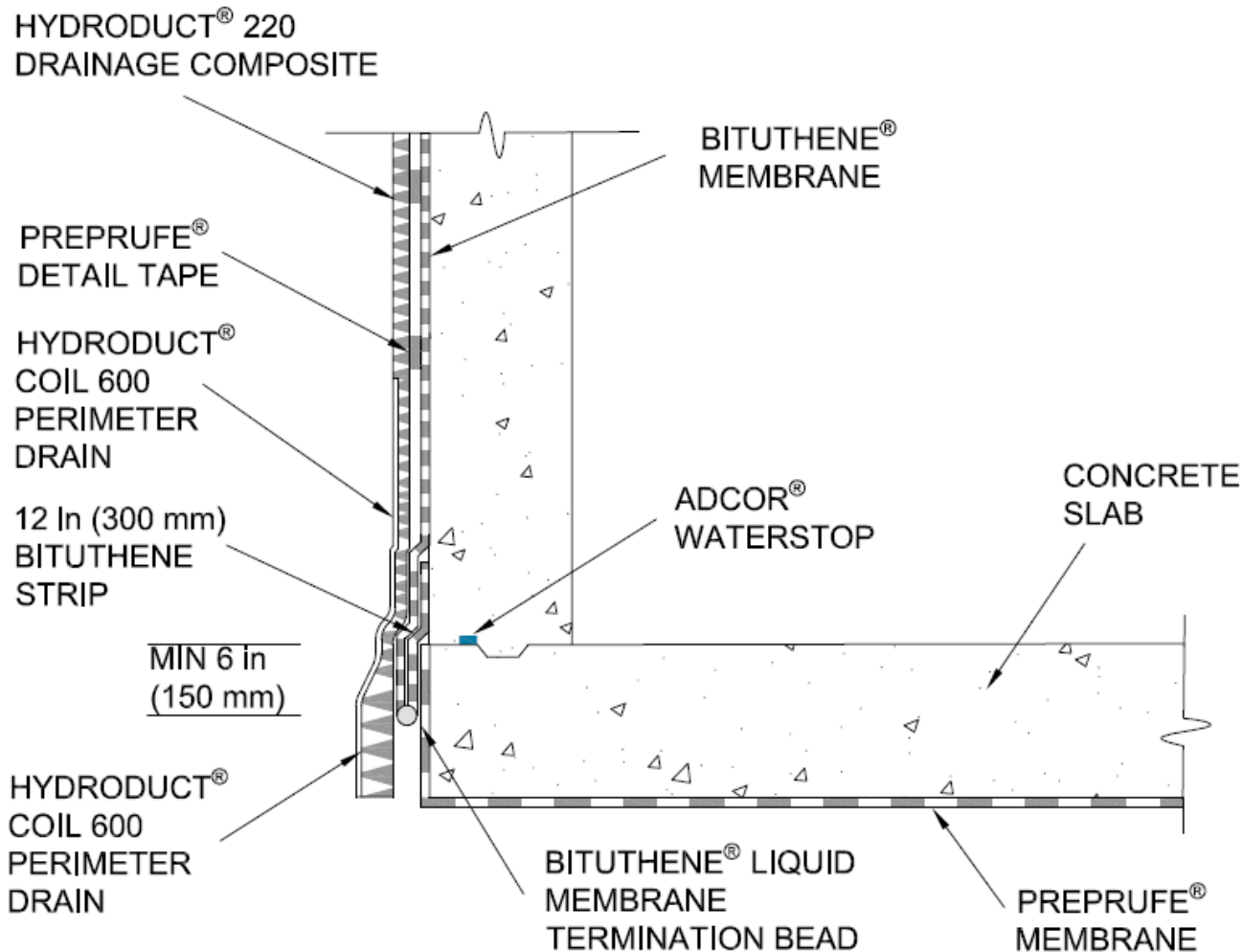
BITUTHENE® WATERPROOFING SYSTEM

DRAWING: BIT-008-A

SCALE: Not to scale

EFFECTIVE DATE: 03/01/2018

SUPERCEDES: 07/01/2016



NOTE - GCP MAY REQUIRE AN ALTERNATE GCP WATERSTOP BASED ON DESIGN CONDITIONS



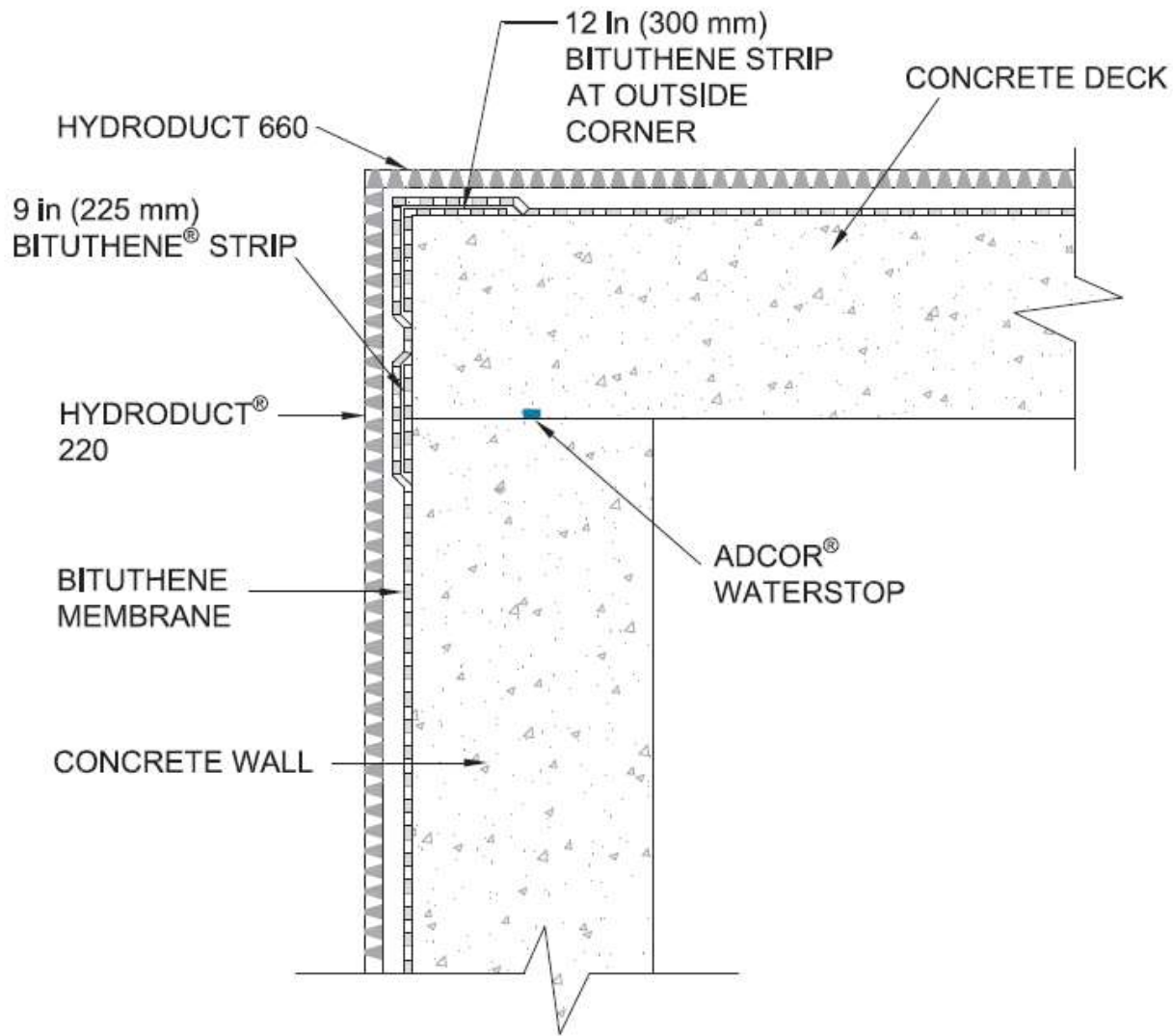
FOUNDATION WALL FLUSH TO STRUCTURAL SLAB BITUTHENE® WATERPROOFING SYSTEM

DRAWING: BIT-008-B

SCALE: Not to scale

EFFECTIVE DATE: 03/01/2016

SUPERCEDES: NEW



NOTE - GCP MAY REQUIRE AN ALTERNATE GCP WATERSTOP BASED ON DESIGN CONDITIONS



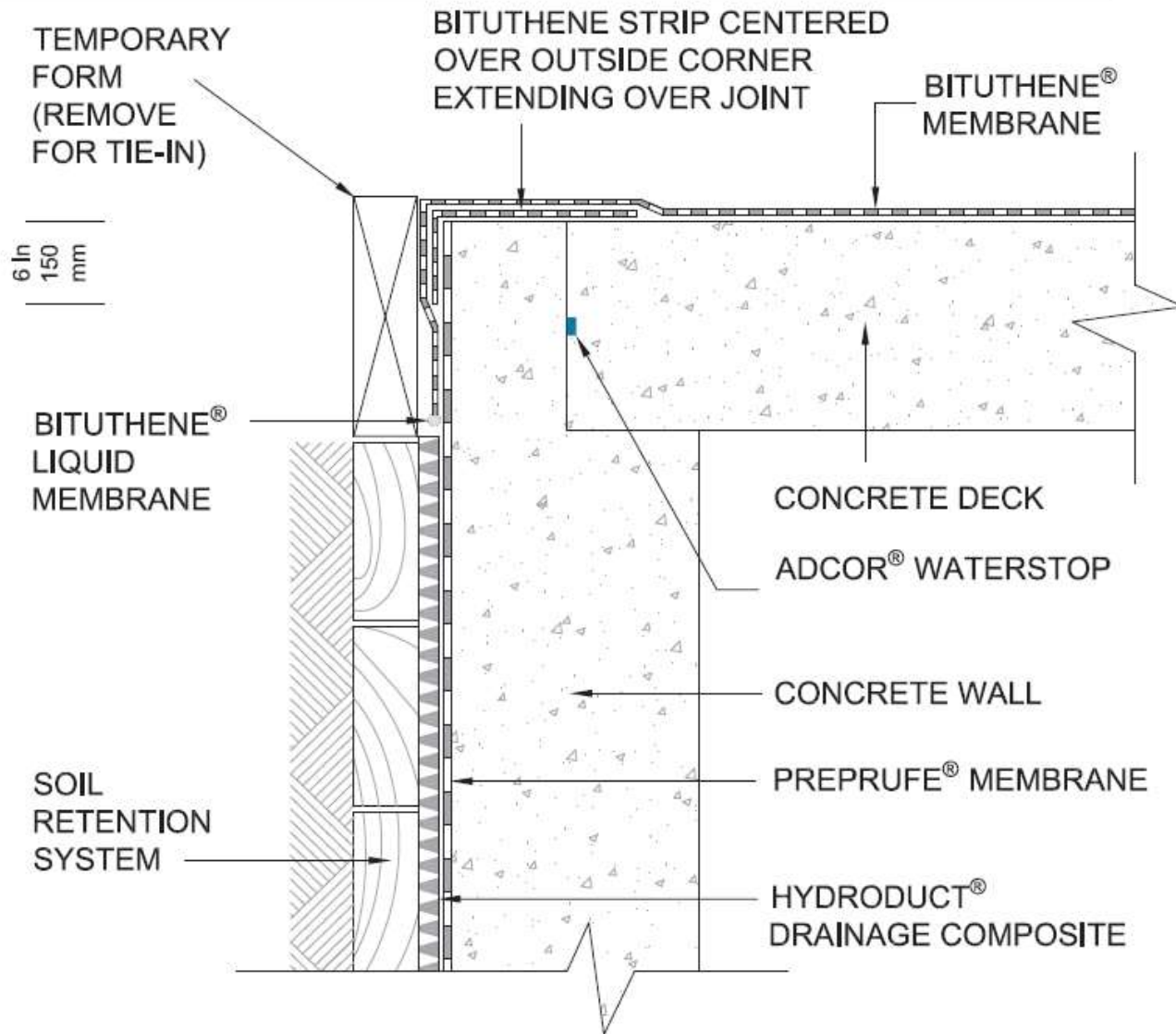
PLAZA DECK TO WALL TIE IN BITUTHENE[®] WATERPROOFING SYSTEM

DRAWING: BIT-012

SCALE: Not to scale

EFFECTIVE DATE: 07/01/2016

SUPERCEDES: 04012015



NOTE - GCP MAY REQUIRE AN ALTERNATE GCP WATERSTOP BASED ON DESIGN CONDITIONS



TIE INTO PLAZA DECK WATERPROOFING

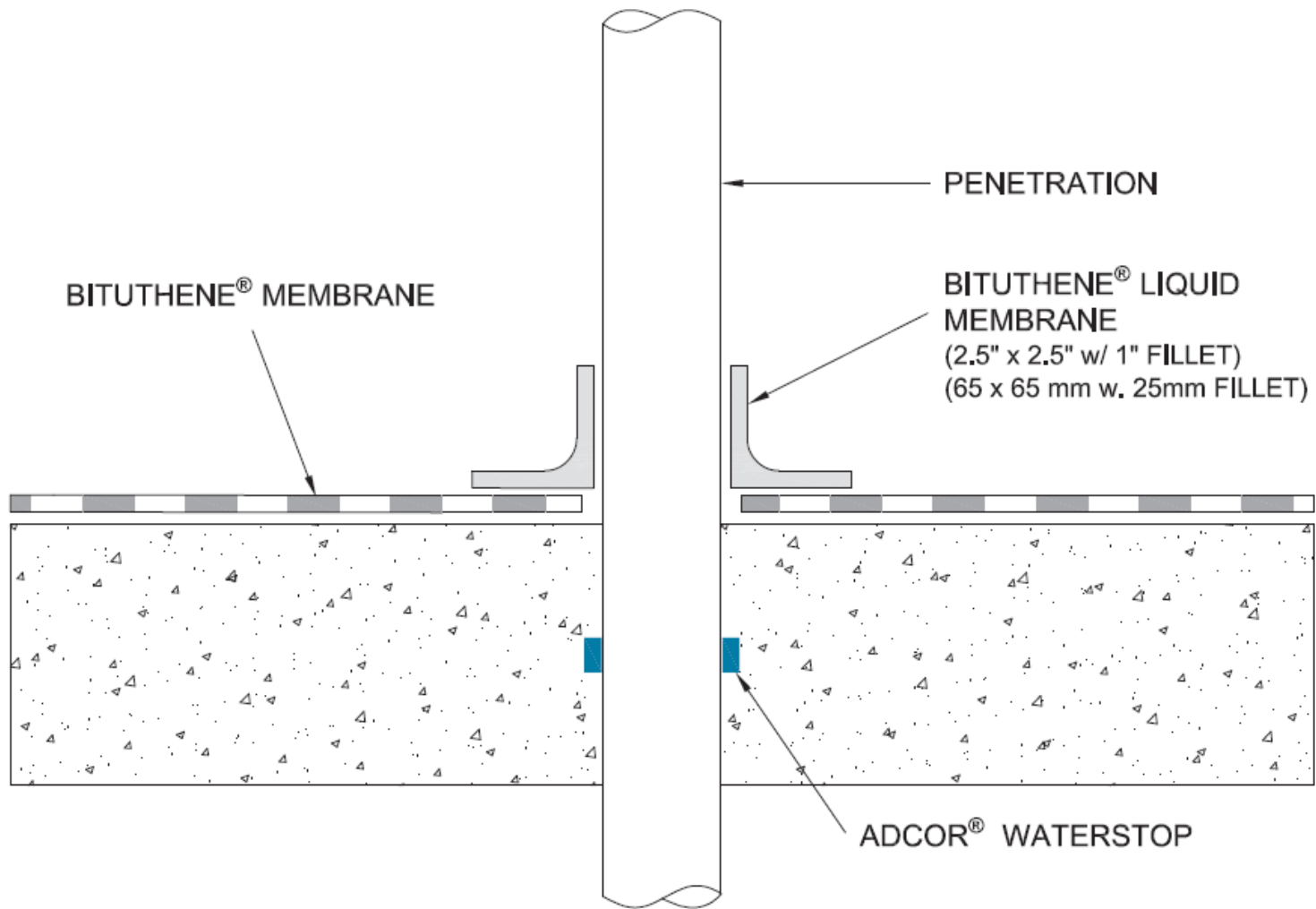
BITUTHENE[®] WATERPROOFING SYSTEM

DRAWING: BIT-014

SCALE: Not to scale

EFFECTIVE DATE: 07/01/2016

SUPERCEDES: 04012015



- NOTES
- HYDRODUCT® OR APPROVED PROTECTION COURSE NOT SHOWN FOR CLARITY
 - GCP MAY REQUIRE AN ALTERNATE GCP WATERSTOP BASED ON DESIGN CONDITIONS



PENETRATION

BITUTHENE® WATERPROOFING SYSTEM

DRAWING: BIT-016

SCALE: Not to scale

EFFECTIVE DATE: 07/01/2016

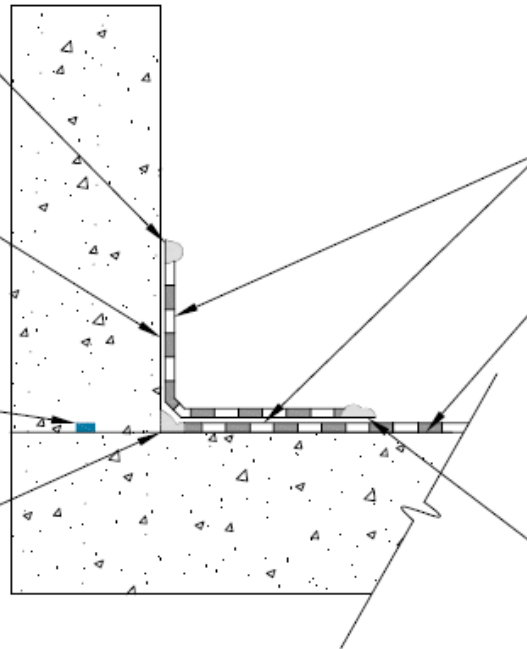
SUPERCEDES: 04012015

BITUTHENE® MASTIC,
BITUTHENE® LIQUID
MEMBRANE, OR
TERMINATION BAR

USE BITUTHENE® LIQUID
MEMBRANE OR OTHER
SUITABLE MATERIAL TO
SMOOTH ROUGH VERTICAL
AREAS

ADCOR®
WATERSTOP

BITUTHENE® LIQUID
MEMBRANE FILLET



BITUTHENE® MEMBRANE

USE BITUTHENE® DECK PREP
SURFACE TREATMENT TO
SMOOTH ROUGH DECK AREAS

BITUTHENE® MASTIC OR
BITUTHENE® LIQUID MEMBRANE
ALL SEAMS WITHIN 12 IN.
(300 mm) OF CORNER

- NOTES - HYDRODUCT OR APPROVED PROTECTION COURSE NOT SHOWN FOR CLARITY
- GCP MAY REQUIRE AN ALTERNATE GCP WATERSTOP BASED ON DESIGN CONDITIONS



PLAZA DECK
DECK TO WALL INSIDE CORNER
BITUTHENE® WATERPROOFING SYSTEM

DRAWING: BIT-019

SCALE: Not to scale

EFFECTIVE DATE: 03/01/2018

SUPERCEDES: 07/01/2016

USE BITUTHENE® DECK PREP
SURFACE TREATMENT TO
SMOOTH ROUGH AREAS

HYDRODUCT® 660
DRAINAGE COMPOSITE
OR APPROVED
PROTECTION COURSE

BITUTHENE STRIP®
9 in. (225 mm)

BITUTHENE®
MEMBRANE

BITUTHENE LIQUID
MEMBRANE® OR
APPROVED SEALANT

BACKER ROD

NOTE - FOR JOINT WHERE MOVEMENT IS EXPECTED (ACTIVE JOINTS) SEE
EXPANSION JOINT COVER DETAIL BIT 024.



PASSIVE JOINT COVER

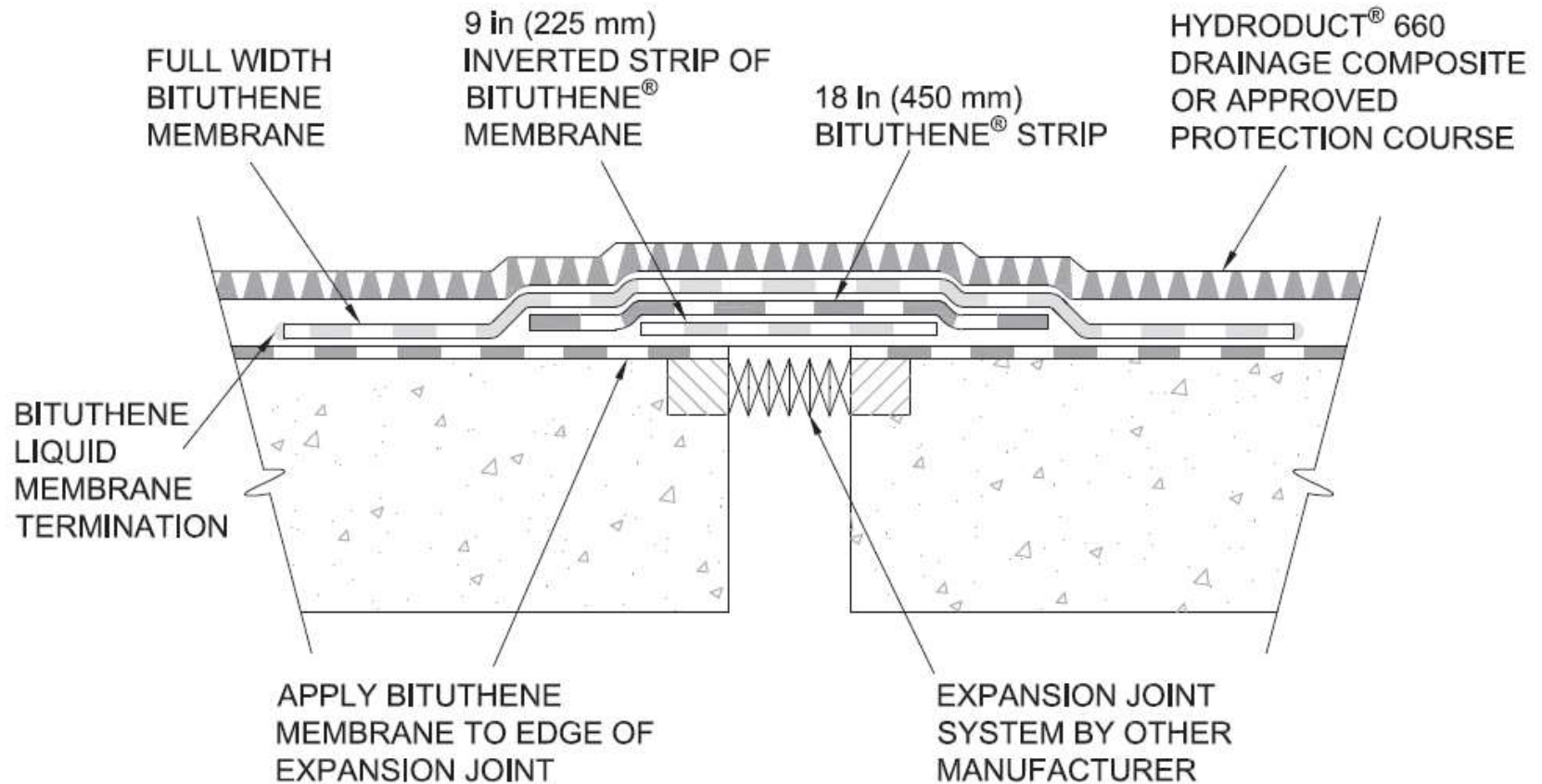
BITUTHENE® WATERPROOFING SYSTEM

DRAWING: BIT 022

SCALE: Not to scale

EFFECTIVE DATE: 07/01/2016

SUPERCEDES: 04012015



- NOTES:
- FOR JOINT WIDTHS UP TO 2 IN. (50 mm) WITH A MAXIMUM OF 1 IN. (25 mm) MOVEMENT
 - FOR JOINTS WITH EXPECTED MOVEMENT OF LESS THAN 0,5 IN. (15 mm) A 6 IN. (150 mm) INVERTED STRIP IS ACCEPTABLE.
 - A WATERPROOF EXPANSION JOINT SYSTEM BY OTHERS MUST BE SELECTED FOR THE WIDTH AND EXPECTED MOVEMENT OF THE JOINT, SEE TECHNICAL LETTER 11 FOR ADDITIONAL INFORMATION.



**EXPANSION JOINT COVER
DECK OR WALL
BITUTHENE® WATERPROOFING SYSTEM**

DRAWING: BIT 024

SCALE: Not to scale

EFFECTIVE DATE: 07/01/2016

SUPERCEDES: 04012015

HYDRODUCT® 660
DRAINAGE COMPOSITE
OR APPROVED
PROTECTION
COURSE

FULL WIDTH
BITUTHENE®
MEMBRANE

BITUTHENE® MASTIC
OR BITUTHENE® LIQUID
MEMBRANE
TERMINATION BEAD

APPLY BITUTHENE
MEMBRANE TO EDGE OF
EXPANSION JOINT

18 IN. (450 mm)
BITUTHENE®
STRIP

9 IN. (225 mm)
INVERTED
STRIP OF
BITUTHENE
MEMBRANE

BITUTHENE MASTIC OR
BITUTHENE LIQUID
MEMBRANE WITH
TERMINATION BAR

EXPANSION JOINT
SYSTEM BY OTHER
MANUFACTURER

- NOTES: - FOR JOINT WIDTHS UP TO 2 IN. (50 mm) WITH A MAXIMUM OF 1 IN. (25 mm) MOVEMENT. IF EXPECTED MOVEMENT IS LESS THAN 0.5 IN. (15 mm) A 6 IN. (150 mm) INVERTED STRIP IS ACCEPTABLE
- A WATERPROOF EXPANSION JOINT SYSTEM BY OTHERS MUST BE SELECTED FOR THE WIDTH AND EXPECTED MOVEMENT OF THE JOINT, SEE TECHNICAL LETTER 11 FOR ADDITIONAL INFORMATION.



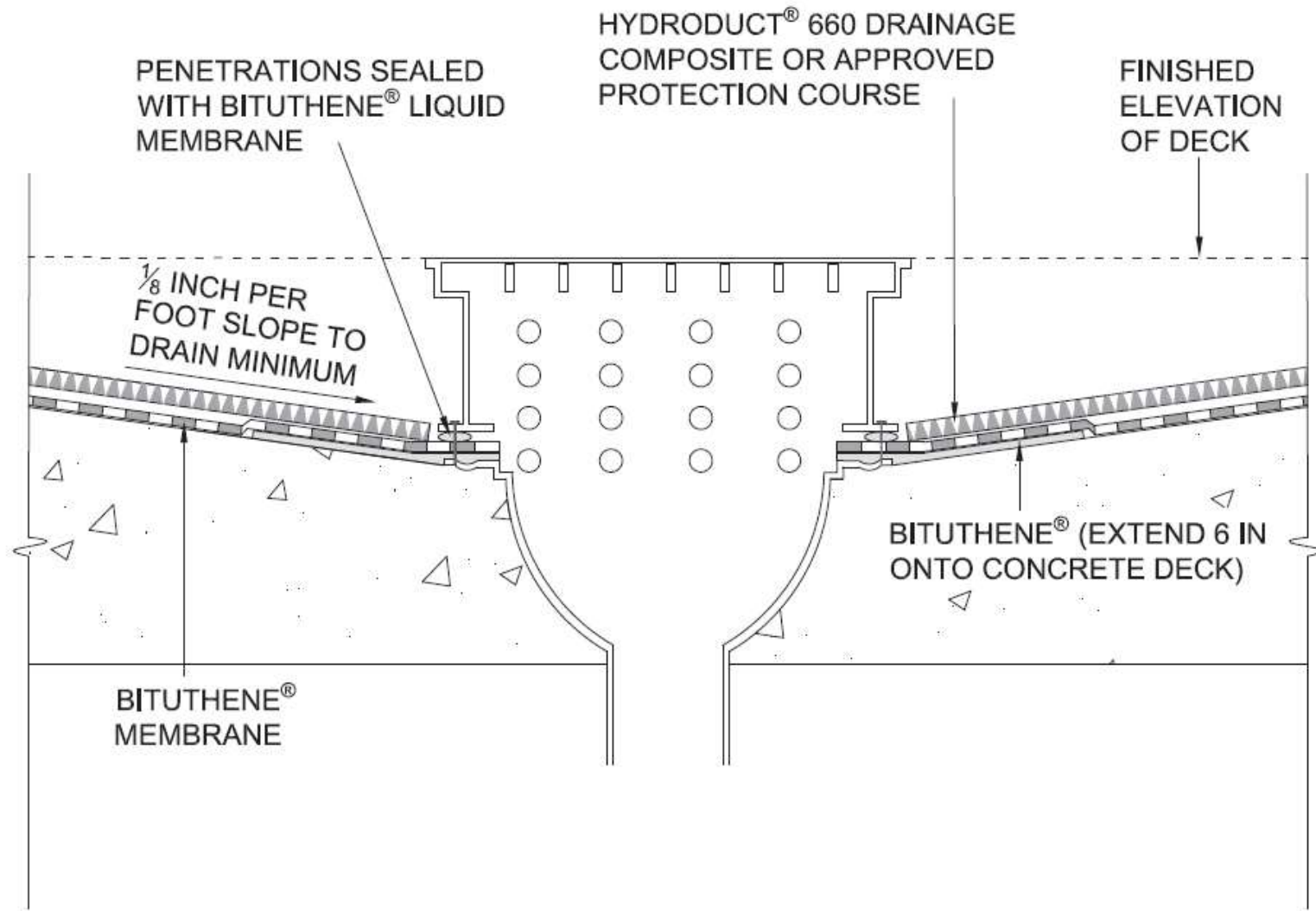
EXPANSION JOINT COVER DECK TO WALL JUNCTION BITUTHENE® WATERPROOFING SYSTEM

DRAWING: BIT 025

SCALE: Not to scale

EFFECTIVE DATE: 07/01/2016

SUPERCEDES: 04012015



DRAIN BITUTHENE[®] WATERPROOFING SYSTEM

DRAWING: BIT026

SCALE: Not to scale

EFFECTIVE DATE: 07/01/2016

SUPERCEDES: 04012015